

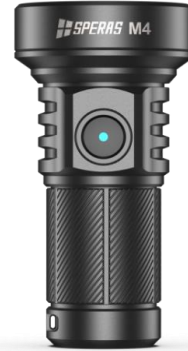


# Shenzhen Speras Lighting Co., Ltd

Address: 4F, Building G, Gangshen Innovation Park, Dalang Street, Longhua District, Shenzhen, China (518109)  
 Tel.: +8675521072597 Mp/WhatsApp: +8617688756138 Email:gloria@speraslight.com

## SPERAS M4 Mini Pocket Throwing Product Details Sales Guide Manual

Model No.	<b>M4</b>
Application	<b>EDC, household, outdoor</b>
Lifespan	Over 50,000hrs
LED	High-performance S50
Circuit	Flick-free circuit,memory function
Batteries	1*18350 6A high discharge rate ternary lithium battery
Voltage	2.8-4.2V
Material	T6061 aircraft-grade Aluminum Alloy
Reflector	Aluminum reflector
Lens	<b>PMMA Material TIR lens</b>
Appearance	Black Finish
Switch	<b>Good Feel Side Switch with power indicator</b>
Waterproof	IP68,Anti-dust,living water and rain proof
Dimension	1.59"(Head dia)*1.02(Body dia.)*30.7"(length) 40.4(Head dia.) *26.0(Body dia.)*78.5(Length)mm
Weight	87.2g/3.07oz
Package	Standard hang box
IN THE BOX	1*M4, 1*18350, 1*Type-C cable 1*Lanyard, 2*Spare O-ring, 1* User manual



SPERAS M4	Turbo	High	Medium	Low	Eco	Strobe	SOS	Retail price (USD)	Wholesale price (USD)
Output Lumens	<b>1320lm</b>	450lm	220lm	60lm	<b>0.5lm</b>	1320lm	220lm	US\$59.99	
Beam Distance	652m 2130ft	387m 1270ft	261m 855ft	130m 426ft	17m 55ft	/	/		
Beam Intensity (cd)	106,400	37,500	17,000	4,250	75	106,400	17,000		
Running Time	1H10mins	1H15mins	2H	7H45mins	<b>220H</b>	/	/		

### M4 Main Features:

1. Compact and powerful: It use one pce high performance S50 LED and advanced circuit design that emits 1320lm with a beam distance of 652 meter.
2. USB-C fast charging with an intelligent power indicator system for optimal chaging and power status indication
3. High transmittance PMMA(polymethylmethacrylate) matters are used to create a well designed TIR lens for an optimal light beam.
4. High efficiency circuit, no flicker and a maximum of 220 hours of autonomy in Eco mode.
5. Reverse polarity protection to prevent damage to the circuit when the battery is installed incorrectly.
6. Overcharge / discharge protection to extend battery life.
7. Lock function to avoid unintended operations.
8. 6061 aerospace aluminum alloy with Type III hard anodizing for a tough, non-abrasive torch.



**Introduction:**

**SPERAS M4** is a well built Mini Pocket Thrower in EDC format and, despite being small (78.5mm long), it grips well. Its size allows you to carry it with you in many ways (fits comfortably in your trouser pocket) and is ideal for everyday use, camping, etc. SPERAS M4 is composed of two parts, the head and the body which turns out to be a single piece with the tail.



**SPERAS M4** uses a high-performance LED (S50), emits intense light up to 1320 lumens and its beam reaches an excellent depth reaching up to 652 m. Includes 7 different lighting modes; Turbo, High, Medium, Low, Eco, Strobe and SOS, with excellent runtimes (up to 220 hours in Eco mode). SPERAS M4 is powered by a 1100mAh 18350 battery, included in the sales package, has a simple interface and has memory on 3 main levels. To avoid energy consumption, or potential damage caused by unintentional ignition, it has an electronic lock function. It has IP68 certification (submersible 2 meters) with impact resistance of 1.5 meters.



**SPERAS M4** is powered by a lithium battery in 18350 format, present in the sales package. The 6A 1100mAh battery is protected and rechargeable via the USB-C port on the M4. It takes about 2 hours and 10 minutes to complete the charge (0.9A).



On the head it could be found a PMMA (polymethylmethacrylate) "TIR" optic that allows a uniform and long beam. The glass lens has an anti-reflective coating. The not indifferent dimensions of the head (40.4mm) allow with this perspective to cover a long distance with a very present hot spot.



The engraving located all on the head are essential with logo, model, CE, Rohs, series No. etc.



Also on the head we also find cooling fins and the switch that allows us to manage the various levels and functions of the M4. The rubber button, just in relief, has a hardly audible click and a status LED in the center that indicates the status of the battery and other functions

When you turn on the flashlight, the indicator in the center of the side switch will indicate the remaining charge level for 5 seconds:

- Green: 100% - 70%
- Orange: 70% - 30%
- Red: 30% - 10%
- Flashing red: 10% - 1%



The battery in the SPERAS M4 is inserted by unscrewing the tube from the head and must be inserted with the positive upwards. On the central tube of the M4, of moderate thickness, we find a fine knurling that gives a nice look to the M4.

The threads of the torch body arrive well greased and have a water and dust seal O-ring. As contacts for the battery we find a plated button on the positive and a spring on the negative.



**Battery charging:** SPERAS M4 has a USB-C charging port protected by a fairly thick rubber flap.

When the battery is charging, the indicator lights up as follows:

Green: Fully charged.

Red: Charging

Orange: Check that the battery is inserted securely or is not faulty.

Note: When the battery is charging, only the ECO level of the M4 can be used.



SPERAS M4 having a flat tail allows you to put the flashlight upright (candle).

Do not miss the hole to insert the lanyard supplied with the flashlight.



## USER INTERFACE (UI)

The user interface of the SPERAS M4 is simple and common to other torches. M4 has 5 normal levels and 2 special levels. M4 has memory on the three main levels: Low, Medium and High. The five normal levels are well spaced for me allowing the M4 good battery management.

Turbo: 1320lm – 1h10min – 106400cd

High: 450lm – 1h15min – 37500cd

Medium: 220lm – 2h – 17000cd

Low: 60lm – 7h45min – 4250cd

Eco: 0.5lm – 220h – 75cd

Strobe: 1320lm – 106400cd

SOS: 220lm – 17000cd

**Single Click:** Every single click to activate / deactivate the stored mode.

**Long press:** When the light is off, long press for more than 0.5 seconds to activate ECO mode.

**Change levels:** When the light is on, long press to switch from Low to Medium to High, loosen the switch to the selected brightness level.

**Double click:** to activate the TURBO (torch off or on). One click to switch between TURBO and stored brightness level.

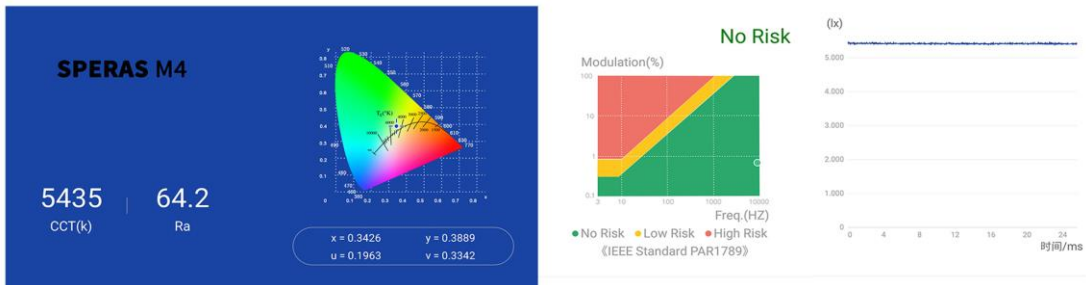
**Triple click:** to activate the Strobe (torch off or on). Another triple click to activate SOS. One click to return to the previously stored level.

**Lock / Unlock:** When the light is off, long press for over 2 seconds continuously to block the light after 2 flashes; when the light is locked, triple click to unlock.

Note: When the M4 is locked, by pressing the switch, the LED in the center of the button flashes orange to warn of the current status.



Speras M4 is a Mini Pocket Thrower capable, despite its small size, of reaching a theoretical distance of 652 meters. The beam of the M4 has a large and bright hotspot with a color temperature of about 5500K (measured with the OPPL Light Master). Not known PWM at any level.



The beam is well done.

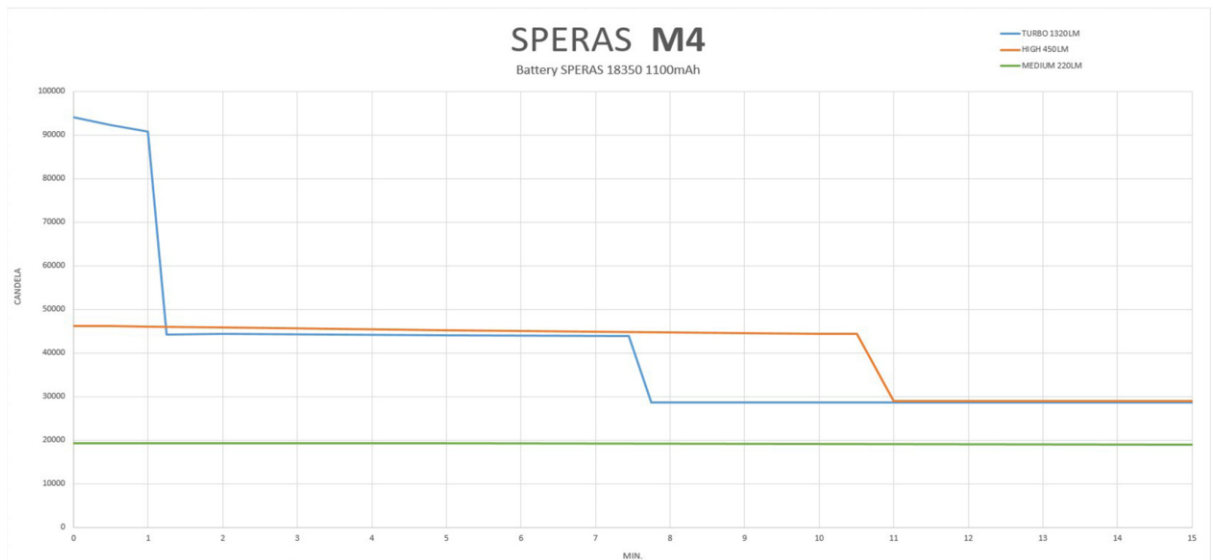


In the dark the coloring is appreciable.

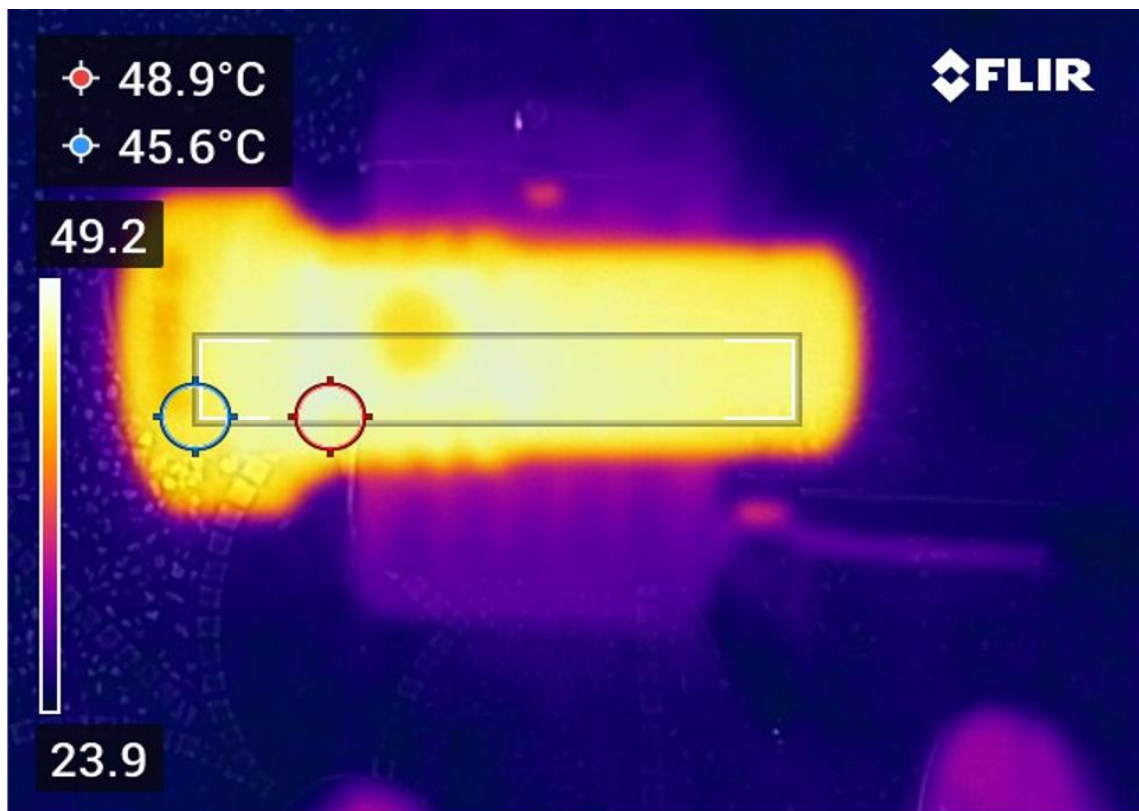


## Running Time

The Runtime was done in a closed environment with an ambient temperature of about 24 ° C using the battery supplied with the flashlight, a fully charged 1100 mAh (6A) Speras 18350.



The temperature taken with a thermal imager camera after about 25 minutes from switching On in High mode



## Inside the Box

There is inside the box:

- 1\* M4 flashlight
- 1\*PB11 battery( inside the flashlight)
- 1\* USB-C cable
- 1\*lanyard
- 2\*O-rings
- 1\*manual



## CONCLUSIONS

SPERAS M4 impressed well, both in general in terms of construction and levels, and tested in the dark in terms of power and quality of the beam. SPEARS M4 is really a small "Thrower" capable of illuminating at considerable distances with a wide and well usable spot. SPERAS M4 comes in a package complete with everything you need to use it right away. The user interface is simple and also includes the possibility of an electronic lock to avoid unpleasant accidental start-ups.

**Shenzhen Speas Lighting Co., Ltd**  
2022-6-9